

AVAILABLE CONFIGURATIONS:

5 port Do-nuts:

Pt No. RIS-DONUT-5-20-25
Body diameter 99mm
3 x M20 ports, 2 x M25 ports
(without glands)

Pt No. RIS-DONUT-5-20
Body diameter 99mm
5 x M20 ports
(without glands)



RIS-DONUT-9-20 shown above
with optional cable glands

6 port Do-nuts:

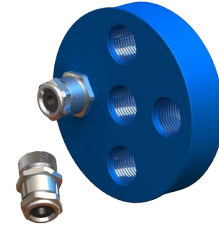
Pt No. RIS-DONUT-6-20-25
Body diameter 99mm
3 x M20 ports, 3 x M25 ports
(without glands)

9 port Do-nuts:

Pt No. RIS-DONUT-9-20
Body diameter 99mm
9 x M20 ports
(without glands)

12 port Do-nuts:

Pt No. RIS-DONUT-133- 12-20
Body diameter 133mm
12 x M20 ports
(without glands)



RIS-DONUT-5-20 shown above

Designed to prevent escape of vapour from access chambers into cable ducts, whilst making routing of cables neat and easy with the use of IP68 rated cable glands. M20/M25 threaded ports for IP rated cable glands.

- Simple to use and easy to seal cable gland 'Do-nut'
- Prevents vapour escaping into cable ducts
- 99mm diameter models available
- 133mm diameter model available with 12 x M20 ports
- Available with integral IP68 rated gland fittings on request
- To be used with proprietary cable duct seals
- Complies with Directive 94/9/EC

Materials:

Anodised aluminium

Suitable for:

IP68 rated gland fittings

Fittings:

(according to model - seeabove)
M20
M25

Document Ref:

DATA-CABLE-GLAND-DONUT-140807