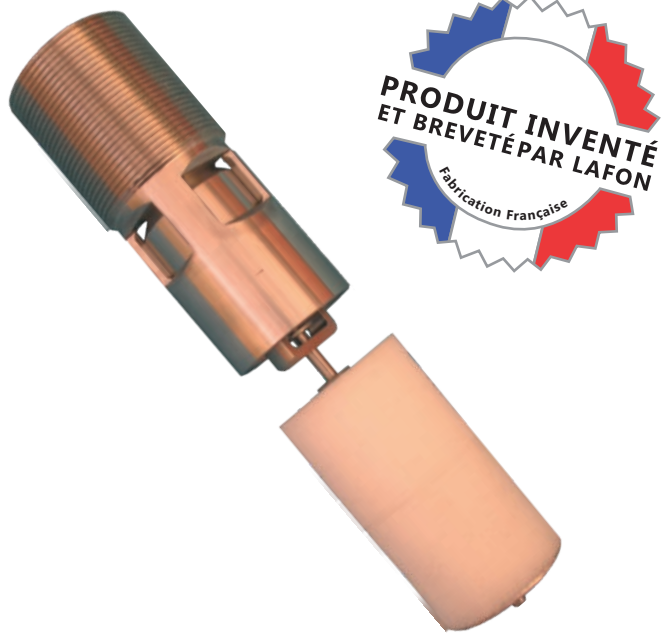




# CLEANFILL 2" AdBlue OVERFILL PREVENTION DEVICE



Overfill prevention devices



Installed on the manlid of the tank, the Cleanfill 2" AdBlue® overfill prevention device is a piece of safety and environmental protection equipment intended for use on AdBlue® storage tanks

The Cleanfill 2" AdBlue® was designed and developed for an exclusive AdBlue® application

The Cleanfill 2" AdBlue® system is LAFON patented

## ADVANTAGES

- Very reliable and long working life
- Operational test on each unit
- Automatic operation
- Easily fitted (without removing the man lid)
- Requires minimal space (optimises useful tank volume)
- Pressure or gravity filling
- Large window on the body for optimal flow
- Piston with grid and calibrates hole to prevent dirt



## PRODUCT

- Can be fitted or removed without removing the manlid
- Very reliable and long working life

## TECHNICAL SPECIFICATIONS

- Operating temperature range : - 10°C ; + 35°C
- Stainless steel body
- High density polyethylen float
- Maximum flow rate : 40 m3/hr - 650 litres/minute
- Minimum flow rate : 2.4 m3/hr - 40 litres/minute
- Maximum pressure : 7 bar - 101 psi
- Minimum pressure : 150 mbar - 2.17 psi
- Re-opening time : less than one minute
- Fits to threaded BSP female sleeve-nut 2"

Référence	Description
10070000	Cleanfill 2" - AdBlue