



PFS Press Pipework System



PFS Press is a single-wall stainless-steel pipework system which offers reliable, consistent and unbelievably fast installation.

Joints are made using the well-proven press-fit crimping method which effectively crimps pipework inside the fittings with a special FPM o-ring seal giving up to 16 bar pressure rating.

Suitable for use in most aboveground fuel applications such as around storage tank farms or inside buildings PFS Press is easily 80% faster to install than threaded and welded systems and means pipe can be cheaply assembled on site in minutes.

Materials

Formed components: material no. 1.4404 / 316L, precision stainless steel castings with smooth welds
Free from harmful constituents compliant with EN 10312, and compliant with the special requirements of DVGW standard GW 541.

PIPE DIAMETER - WALL THICKNESS - WEIGHT - VOLUME				
Nominal diameter DN	Outside diameter mm	Wall thickness mm	Weight of empty pipe kg/m	Internal volume of pipe l/m
12	15	1	0.351	0.133
15	18	1	0.426	0.201
20	22	1.2	0.626	0.302
25	28	1.2	0.806	0.515
32	35	1.5	1.260	0.804
40	42	1.5	1.523	1.195
50	54	1.5	1.974	2.043
65	76.1	2	3.715	4.083
80	88.9	2	4.357	5.661
100	108	2	5.315	8.495

Benefits

- Easy and quick installation
- Low cost of labour
- No gluing, threading or welding
- Reliable, repeatable joints
- Corrosion resistant
- Readily available tools (hire or purchase)
- No training required
- Large range of pipe diameters & fittings

Technical Specs

- 316L / 1.4404 Stainless Steel
- Tube to BS EN10312, BS EN10217-7
- Pressure Rating 16 BAR (240 PSI)
- Diameters (mm) OD
15,18,22,28,35,42,54,76.1,88.9 & 108mm
- Female Threads Parallel TO EN10226-1/ISO7-1
- Male Threads are BSPT (Taper) to ISO 7-1
- Temperature -20 to + 200deg C FPM Seals (FUELS)
- Temperature -35 to + 135deg C EPDM (ADBLUE)



Installation

STEP 1 – CUT

Cut the pipe using suitable tool that will avoid the risk of buckling and give a clean straight edge. A pipe cutter with suitable cutting wheel are a good choice

STEP 2 – DEBURR

Carefully deburr the pipe, both internally and externally, as a residual burr could damage the O-ring and compromise the tightness of the connection.

STEP 3 – O-RING CHECK

Check the correct position and type of O-ring inside the toroidal chamber and lubricate it with water or soap. Do not use any oil or grease.

Green O-ring = FKM (Fuels)

Black O-ring = EPDM (AdBlue)

STEP 4 – MARK

Mark the correct insertion depth using a marker in order to see any possible movement before pressing.

STEP 5 – INSERT

Insert pipe into fittings, ensuring it is fully inserted

STEP 6 – SELECT CORRECT PRESS TOOL

Select the correct pressing tool with the suitable jaw as per the diameter of the fitting to be pressed.

Set the pressing tool in the correct way so that the toroidal chamber is inside the proper housing of the jaw.

STEP 7 – PRESS

Carry out the pressing process until the jaw halves come into contact.



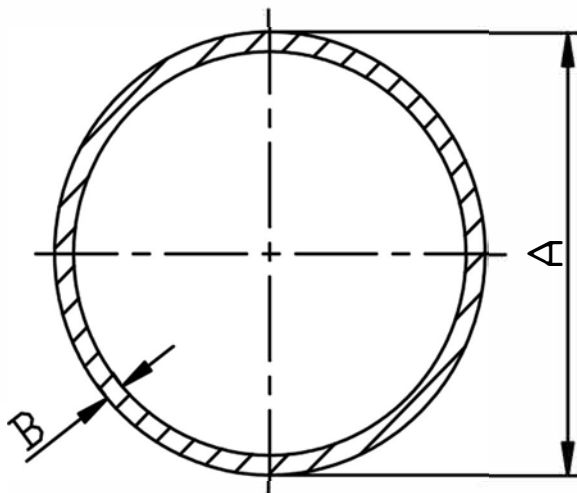
Press Tools

Press machines and press jaws should fulfil the following requirements:

- The press tools must be serviced and maintained in line with the respective manufacturer's guidelines.
- Compact press machines (up to and including 28mm) must use a minimum press force of 18 kN.
- Conventional and electronic press machines (up to and including 108mm) must use a minimum press force of 30 kN.
- For pipe joints up to and including 54mm diameter, the press jaws and collars must have SA, M or V profiles.
- For pipe joints greater than 54mm diameter, the press jaws and collars for must have SA or M profiles.



PRESS FIT TUBE



PFS Press fittings offer reliable and consistent performance, combined with an easy installation process using common M-contour design and tooling compatibility.

Each end has a toroidal seat, holding a fluoropolymer (FPM) O-ring gasket. The fittings are installed with blue sleeves, which easily peel off after the pressing process.

All fittings are made from 316L (1.4404)

Fitted with Fluoropolymer (FPM) O-rings suitable for fuel delivery applications

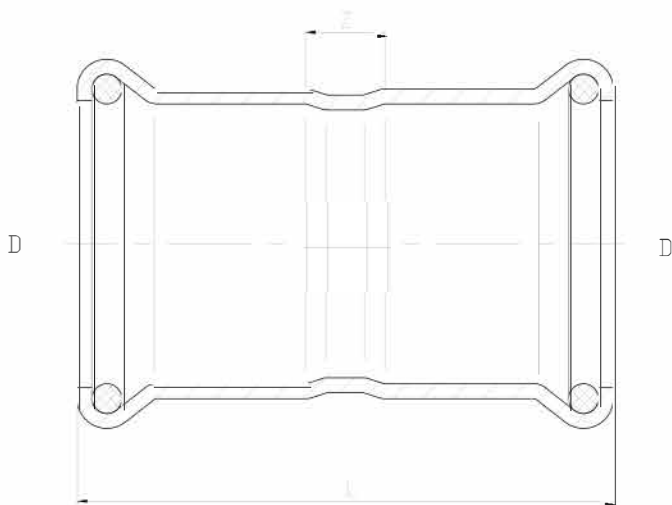
SIZE	PRODUCT CODE	A	B	KG P/MTR
15MM		15MM	1MM	0.351
18MM		18MM	1MM	0.58
22MM		22MM	1.2MM	0.75
28MM		28MM	1.2MM	0.99
35MM		35MM	1.5MM	1.25
42MM		42MM	1.5MM	1.95
54MM		54MM	1.5MM	2.89
76.1MM		76.1MM	2MM	3.76
88.9MM		88.9MM	2MM	4.25
108MM		108MM	2MM	5.11



Application	Operating temperature	Maximum operating pressure	Seal
Diesel	-20 to +70°C	16 BAR	FPM
Gasoil	-20 to +70°C	16 BAR	FPM
Ethanol	-20 to +70°C	16 BAR	FPM
Glycol/anti-freeze	-30 to +120°C	16 BAR	FPM
Petrol	-20 to +70°C	16 BAR	FPM
Adblue (DEF)	-20 to +70°C	16 BAR	FPM
Compressed air	0 to 100°C	16 BAR	EPDM
Hot and cold potable water	0 to 100°C	16 BAR	EPDM



PRESS FIT COUPLING



PFS Press fittings offer reliable and consistent performance, combined with an easy installation process using common M-contour design and tooling compatibility.

Each end has a toroidal seat, holding a fluoropolymer (FPM) O-ring gasket. The fittings are installed with blue sleeves, which easily peel off after the pressing process.

All fittings are made from 316L (1.4404)

Fitted with Fluoropolymer (FPM) O-rings suitable for fuel delivery applications

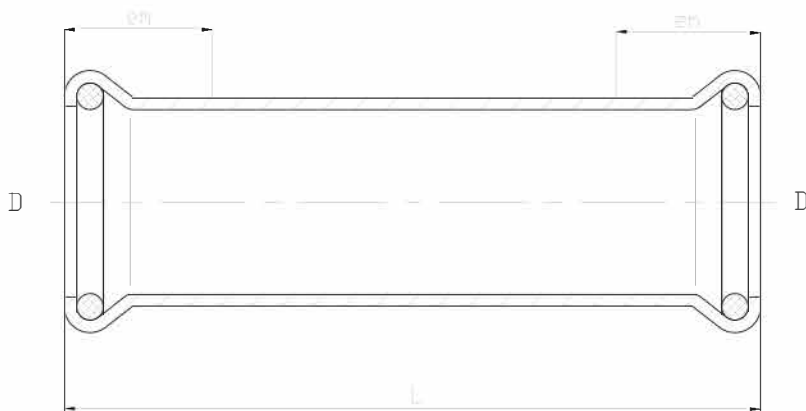


SIZE	PART No	D	L	Z	WEIGHT
					KG EACH
15		15	48	8	0.034
18		18	48	8	0.04
22		22	50	8	0.051
28		28	54	8	0.067
35		35	62	10	0.095
42		42	71	11	0.138
54		54	83	13	0.19
76.1		76.1	141	35	0.588
88.9		88.9	162	42	0.767
108		108.0	194	44	1.188

Application	Operating temperature	Maximum operating pressure	Seal
Diesel	-20 to +70°C	16 BAR	FPM
Gasoil	-20 to +70°C	16 BAR	FPM
Ethanol	-20 to +70°C	16 BAR	FPM
Glycol/anti-freeze	-30 to +120°C	16 BAR	FPM
Petrol	-20 to +70°C	16 BAR	FPM
Adblue (DEF)	-20 to +70°C	16 BAR	FPM
Compressed air	0 to 100°C	16 BAR	EPDM
Hot and cold potable water	0 to 100°C	16 BAR	EPDM



PRESS FIT LONG COUPLING



PFS Press fittings offer reliable and consistent performance, combined with an easy installation process using common M-contour design and tooling compatibility.

Each end has a toroidal seat, holding a fluoropolymer (FPM) O-ring gasket. The fittings are installed with blue sleeves, which easily peel off after the pressing process.

All fittings are made from 316L (1.4404)

Fitted with Fluoropolymer (FPM) O-rings suitable for fuel delivery applications

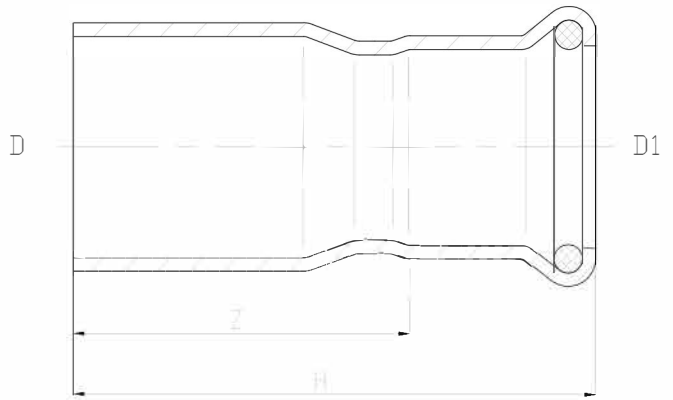


SIZE	PART No	D	L	EM	WEIGHT KG EACH
15		15	67	25	0.045
18		18	67.5	25	0.054
22		22	73	25	0.069
28		28	83	30	0.097
35		35	98	30	0.14
42		42	114.5	40	0.198
54		54	137.5	40	0.299
76.1		76.1	229	60	0.722
88.9		88.9	263	70	0.848
108		108.0	313	80	1.258

Application	Operating temperature	Maximum operating pressure	Seal
Diesel	-20 to +70°C	16 BAR	FPM
Gasoil	-20 to +70°C	16 BAR	FPM
Ethanol	-20 to +70°C	16 BAR	FPM
Glycol/anti-freeze	-30 to +120°C	16 BAR	FPM
Petrol	-20 to +70°C	16 BAR	FPM
Adblue (DEF)	-20 to +70°C	16 BAR	FPM
Compressed air	0 to 100°C	16 BAR	EPDM
Hot and cold potable water	0 to 100°C	16 BAR	EPDM



PRESS FIT REDUCING ADAPTOR



PFS Press fittings offer reliable and consistent performance, combined with an easy installation process using common M-contour design and tooling compatibility.

Each end has a toroidal seat, holding a fluoropolymer (FPM) O-ring gasket. The fittings are installed with blue sleeves, which easily peel off after the pressing process.

All fittings are made from 316L (1.4404)

SIZE	PART No	D	D1	H	Z	WEIGHT KG EACH
18x15		18	15	60	40	0.039
22x15		22	15	63	43	0.043
22x18		22	18	62	42	0.045
28x15		28	15	66	46	0.056
28x18		28	18	64	44	0.059
28x22		28	22	62	41	0.061
35x15		35	15	72	51	0.078
35x18		35	18	77	57	0.082
35x22		35	22	71	50	0.084
35x28		35	28	78	55	0.085
42x15		42	15	82	61	0.106
42x18		42	18	82	62	0.111
42x22		42	22	94	73	0.126
42x28		42	28	83	60	0.119
42x35		42	35	77	51	0.115
54x15		54	15	95	74	0.168
54x18		54	18	94	73	0.174
54x22		54	22	95	74	0.165
54x28		54	28	100	77	0.192
54x35		54	35	99	73	0.187
54x42		54	42	92	62	0.175
76.1x54		76.1	54	146	111	0.465
88.9x54		88.9	54	163	128	0.591
88.9x76.1		88.9	76.1	161	108	0.676
108x54		108	54	163	128	0.739
108x76.1		108	76.1	184	131	0.859
108x88.9		108	88.9	203	143	1.045

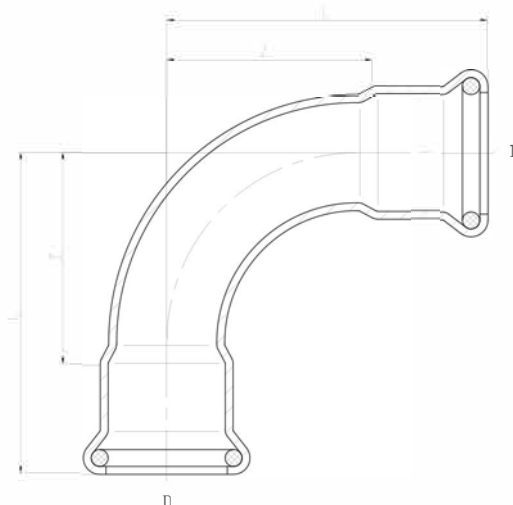
Fitted with Fluoropolymer (FPM) O-rings suitable for fuel delivery applications



Application	Operating temperature	Maximum operating pressure	Seal
Diesel	-20 to +70°C	16 BAR	FPM
Gasoil	-20 to +70°C	16 BAR	FPM
Ethanol	-20 to +70°C	16 BAR	FPM
Glycol/anti-freeze	-30 to +120°C	16 BAR	FPM
Petrol	-20 to +70°C	16 BAR	FPM
Adblue (DEF)	-20 to +70°C	16 BAR	FPM
Compressed air	0 to 100°C	16 BAR	EPDM
Hot and cold potable water	0 to 100°C	16 BAR	EPDM



PRESS FIT 90° ELBOW



PFS Pressfittings offer reliable and consistent performance, combined with an easy installation process using common M-contour design and tooling compatibility.

Each end has a toroidal seat, holding a fluoropolymer (FPM) O-ring gasket. The fittings are installed with blue sleeves, which easily peel off after the pressing process.

All fittings are made from 316L (1.4404)

Fitted with Fluoropolymer (FPM) O-rings suitable for fuel delivery applications

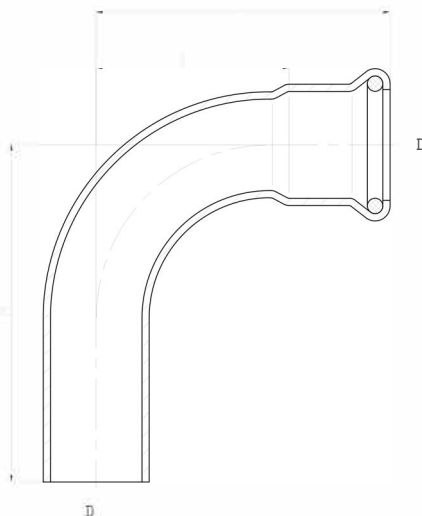
SIZE	PART No	D	L	Z	WEIGHT KG EACH
15		15	49	29	0.056
18		18	53	33	0.064
22		22	61	40	0.097
28		28	72	49	0.131
35		35	78	52	0.181
42		42	90	62	0.254
54		54	110	75	0.386
76.1		76.1	184	131	1.159
88.9		88.9	210	150	1.61
108		108	241	166	2.298



Application	Operating temperature	Maximum operating pressure	Seal
Diesel	-20 to +70°C	16 BAR	FPM
Gasoil	-20 to +70°C	16 BAR	FPM
Ethanol	-20 to +70°C	16 BAR	FPM
Glycol/anti-freeze	-30 to +120°C	16 BAR	FPM
Petrol	-20 to +70°C	16 BAR	FPM
Adblue (DEF)	-20 to +70°C	16 BAR	FPM
Compressed air	0 to 100°C	16 BAR	EPDM
Hot and cold potable water	0 to 100°C	16 BAR	EPDM



PRESS FIT 90° EXTENSION ELBOW



PFS PRESS fittings offer reliable and consistent performance, combined with an easy installation process using common M-contour design and tooling compatibility.

The end has a toroidal seat, holding a fluoropolymer (FPM) O-ring gasket. The rings are installed with blue sleeves, which easily peel off after the pressing process.

Fittings are made from 316L (1.4404)

Fitted with Fluoropolymer (FPM) O-rings suitable for fuel delivery applications

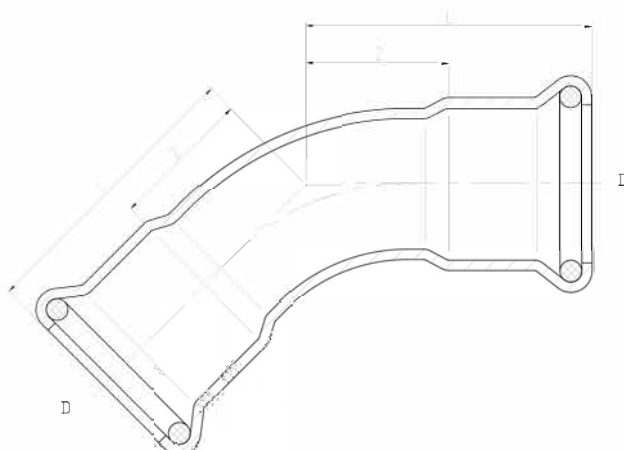
SIZE	PART No	D	L	Z	H	WEIGHT KG EACH
15		15	49	29	57	0.053
18		18	53	33	61	0.066
22		22	61	40	70	0.089
28		28	72	49	79	0.134
35		35	78	52	90	0.18
42		42	90	60	102	0.262
54		54	110	75	122	0.391
76.1		76.1	175	122	188	1.131
88.9		88.9	208	148	223	1.604
108		108	243	168	262	2.33



Application	Operating temperature	Maximum operating pressure	Seal
Diesel	-20 to +70°C	16 BAR	FPM
Gasoil	-20 to +70°C	16 BAR	FPM
Ethanol	-20 to +70°C	16 BAR	FPM
Glycol/anti-freeze	-30 to +120°C	16 BAR	FPM
Petrol	-20 to +70°C	16 BAR	FPM
Adblue (DEF)	-20 to +70°C	16 BAR	FPM
Compressed air	0 to 100°C	16 BAR	EPDM
Hot and cold potable water	0 to 100°C	16 BAR	EPDM



PRESS FIT 45° ELBOW



PFS Press fittings offer reliable and consistent performance, combined with an easy installation process using common M-contour design and tooling compatibility.

Each end has a toroidal seat, holding a fluoropolymer (FPM) O-ring gasket. The fittings are installed with blue sleeves, which easily peel off after the pressing process.

All fittings are made from 316L (1.4404)

Fitted with Fluoropolymer (FPM) O-rings suitable for fuel delivery applications

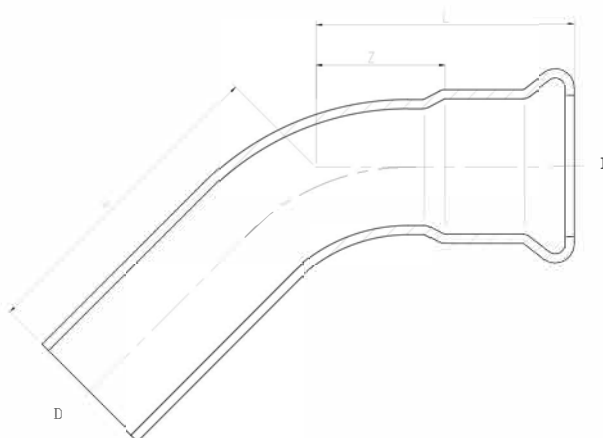
SIZE	PART No	D	L	Z	WEIGHT
					KG EACH
15		15	35	15	0.048
18		18	37	17	0.053
22		22	42	21	0.076
28		28	48	25	0.103
35		35	52	26	0.137
42		42	60	30	0.199
54		54	72	37	0.29
76.1		76.1	112	59	0.854
88.9		88.9	127	67	1.11
108		108	155	80	1.653



Application	Operating temperature	Maximum operating pressure	Seal
Diesel	-20 to +70°C	16 BAR	FPM
Gasoil	-20 to +70°C	16 BAR	FPM
Ethanol	-20 to +70°C	16 BAR	FPM
Glycol/anti-freeze	-30 to +120°C	16 BAR	FPM
Petrol	-20 to +70°C	16 BAR	FPM
Adblue (DEF)	-20 to +70°C	16 BAR	FPM
Compressed air	0 to 100°C	16 BAR	EPDM
Hot and cold potable water	0 to 100°C	16 BAR	EPDM



PRESS FIT 45° EXTENSION ELBOW



PFS Press fittings offer reliable and consistent performance, combined with an easy installation process using common M-contour design and tooling compatibility.

Each end has a toroidal seat, holding a fluoropolymer (FPM) O-ring gasket. The fittings are installed with blue sleeves, which easily peel off after the pressing process.

All fittings are made from 316L (1.4404)

Fitted with Fluoropolymer (FPM) O-rings suitable for fuel delivery applications

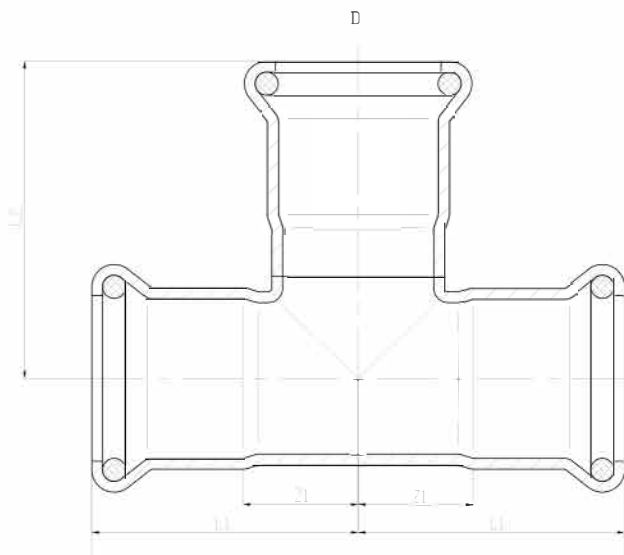
SIZE	PART No	D	L	H	Z	WEIGHT KG EACH
15		15	35	40	15	0.047
18		18	37	42	17	0.054
22		22	42	52	21	0.075
28		28	48	56	25	0.106
35		35	52	62	26	0.14
42		42	60	72	30	0.228
54		54	72	84	37	0.303
76.1		76.1	119	115	66	0.846
88.9		88.9	143	130	83	1.117
108		108	162	172	87	1.738



Application	Operating temperature	Maximum operating pressure	Seal
Diesel	-20 to +70°C	16 BAR	FPM
Gasoil	-20 to +70°C	16 BAR	FPM
Ethanol	-20 to +70°C	16 BAR	FPM
Glycol/anti-freeze	-30 to +120°C	16 BAR	FPM
Petrol	-20 to +70°C	16 BAR	FPM
Adblue (DEF)	-20 to +70°C	16 BAR	FPM
Compressed air	0 to 100°C	16 BAR	EPDM
Hot and cold potable water	0 to 100°C	16 BAR	EPDM



PRESS FIT TEE



PFS Press fittings offer reliable and consistent performance, combined with an easy installation process using common M-contour design and tooling compatibility.

Each end has a toroidal seat, holding a fluoropolymer (FPM) O-ring gasket. The fittings are installed with blue sleeves, which easily peel off after the pressing process.

All fittings are made from 316L (1.4404)

Fitted with Fluoropolymer (FPM) O-rings suitable for fuel delivery applications



SIZE	PART No	D	L	L1	L3	Z1	WEIGHT KG EACH
15		15	66	33	38.5	13	0.065
18		18	68	34	41	14	0.084
22		22	74	37	44	16	0.108
28		28	84	42	53	19	0.151
35		35	100	53	57	27	0.194
42		42	114	57	62	27	0.268
54		54	138	69	76.5	34	0.389
76.1		76.1	230	115	110	62	1.203
88.9		88.9	260	130	128	70	1.58
108		108	310	150	153	75	2.219

Application	Operating temperature	Maximum operating pressure	Seal
Diesel	-20 to +70°C	16 BAR	FPM
Gasoil	-20 to +70°C	16 BAR	FPM
Ethanol	-20 to +70°C	16 BAR	FPM
Glycol/anti-freeze	-30 to +120°C	16 BAR	FPM
Petrol	-20 to +70°C	16 BAR	FPM
Adblue (DEF)	-20 to +70°C	16 BAR	FPM
Compressed air	0 to 100°C	16 BAR	EPDM
Hot and cold potable water	0 to 100°C	16 BAR	EPDM



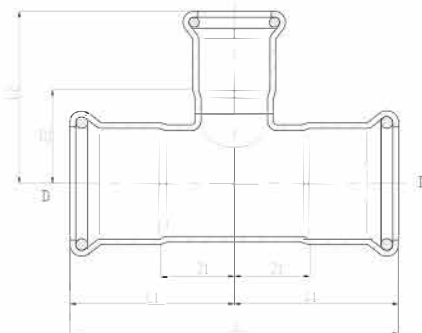
PRESS FIT REDUCING TEE



PFS Press fittings offer reliable and consistent performance, cor installation process using common M-countour design and tooli

Each end has a toroidal seat, holding a fluoropolymer (FPM) O-rings are installed with blue sleeves, which easily peel off after the pressing process.

All fittings are made from 316L (1.4404)



SIZE	PART No	D-D1-D	L	L1	L2	Z1	WEIGHT KG EACH
18x15x18	PFRT1815	18-15-18	68	34	40	14	0.079
22x15x22	PFRT2215	22-15-22	74	37	43	16	0.092
22x18x22	PFRT2218	22-18-22	74	37	43	16	0.097
28x15x28	PFRT2815	28-15-28	84	42	46	19	0.123
28x18x28	PFRT2818	28-18-28	84	42	46	19	0.126
28x22x28	PFRT2822	28-22-28	84	42	47	19	0.134
35x15x35		35-15-35	100	50	49	24	0.163
35x18x35		35-18-35	100	50	49	24	0.162
35x22x35		35-22-35	100	50	50	24	0.171
35x28x35		35-28-35	100	50	53	24	0.179
42x15x42		42-15-42	114	57	51	27	0.215
42x18x42		42-18-42	114	57	53	27	0.218
42x22x42		42-22-42	114	57	54	27	0.229
42x28x42		42-28-42	114	57	57	27	0.24
42x35x42		42-35-42	114	57	60.5	27	0.245
54x15x54		54-15-54	138	69	59	34	0.309
54x18x54		54-18-54	138	69	58.5	34	0.321
54x22x54		54-22-54	138	69	60	34	0.326
54x28x54		54-28-54	138	69	63	34	0.337
54x35x54		54-35-54	138	69	66.5	34	0.346
54x42x54		54-42-54	138	69	71	34	0.373
76.1x22x76.1		76.1-22.0-76.1	230	115	70	62	0.931
76.1x28x76.1		76.1-28.0-76.1	230	115	75	62	0.951
76.1x35x76.1		76.1-35.0-76.1	230	115	77	62	0.934
76.1x42x76.1		76.1-42.0-76.1	230	115	82	62	0.95
76.1x54x76.1		76.1-54.0-76.1	230	115	88	62	0.977
88.9x22x88.9		88.9-22.0-88.9	260	130	76	70	1.206
88.9x28x88.9		88.9-28.0-88.9	260	130	81	70	1.221
88.9x35x88.9		88.9-35.0-88.9	260	130	83	70	1.223
88.9x42x88.9		88.9-42.0-88.9	260	130	87	70	1.246
88.9x54x88.9		88.9-54.0-88.9	260	130	93	70	1.272
88.9x76.1x88.9		88.9-76.1-88.9	260	130	118	70	1.447
108x22x108		108-22-108	310	152	86	77	1.738
108x28x108		108-28-108	310	155	93	80	1.735
108x35x108		108-35-108	310	155	93	80	1.759
108x42x108		108-42-108	310	155	97	80	1.77
108x54x108		108-54-108	310	155	105	80	1.799
108x76.1x108		108-76.1-108	310	155	131	80	1.974
108x88.9x108		108-88.9-108	310	155	141	80	2.057

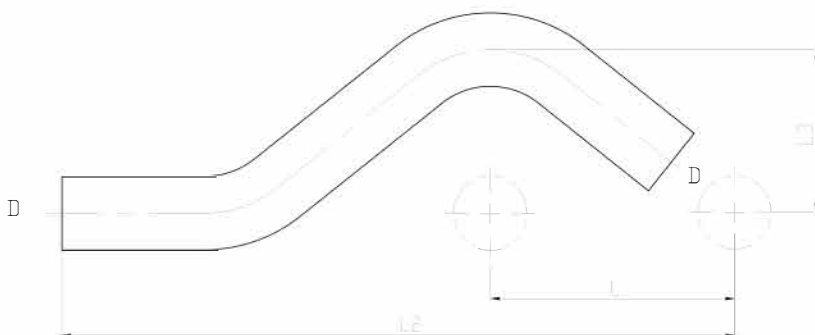
Fitted with Fluoropolymer (FPM) O-rings suitable for fuel delivery applications



Application	Operating temperature	Maximum operating pressure	Seal
Diesel	-20 to +70°C	16 BAR	FPM
Gasoil	-20 to +70°C	16 BAR	FPM
Ethanol	-20 to +70°C	16 BAR	FPM
Glycol/anti-freeze	-30 to +120°C	16 BAR	FPM
Petrol	-20 to +70°C	16 BAR	FPM
Adblue (DEF)	-20 to +70°C	16 BAR	FPM
Compressed air	0 to 100°C	16 BAR	EPDM
Hot and cold potable water	0 to 100°C	16 BAR	EPDM



PRESS FIT BRIDGE



PFS Press fittings offer reliable and consistent performance, combined with an easy installation process using common M-contour design and tooling compatibility.

Each end has a toroidal seat, holding a fluoropolymer (FPM) O-ring gasket. The fittings are installed with blue sleeves, which easily peel off after the pressing process.

All fittings are made from 316L (1.4404)

Fitted with Fluoropolymer (FPM) O-rings suitable for fuel delivery applications

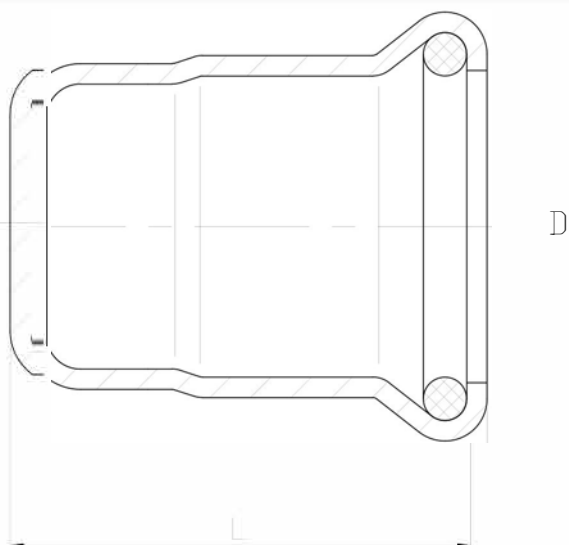


SIZE	PART No	D	L1	L	H	WEIGHT KG EACH
15		15	57	158	37	0.105
18		18	60	165	40	0.145
22		22	65	178	44	0.196
28		28	74	210	50	0.211

Application	Operating temperature	Maximum operating pressure	Seal
Diesel	-20 to +70°C	16 BAR	FPM
Gasoil	-20 to +70°C	16 BAR	FPM
Ethanol	-20 to +70°C	16 BAR	FPM
Glycol/anti-freeze	-30 to +120°C	16 BAR	FPM
Petrol	-20 to +70°C	16 BAR	FPM
Adblue (DEF)	-20 to +70°C	16 BAR	FPM
Compressed air	0 to 100°C	16 BAR	EPDM
Hot and cold potable water	0 to 100°C	16 BAR	EPDM



PRESS FIT CAP



PFS Press fittings offer reliable and consistent performance, combined with an easy installation process using common M-contour design and tooling compatibility.

Each end has a toroidal seat, holding a fluoropolymer (FPM) O-ring gasket. The fittings are installed with blue sleeves, which easily peel off after the pressing process.

All fittings are made from 316L (1.4404)

Fitted with Fluoropolymer (FPM) O-rings suitable for fuel delivery applications

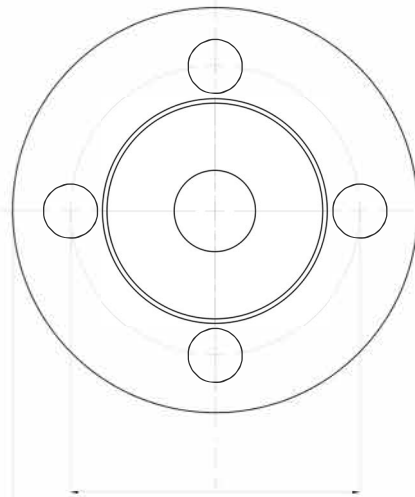
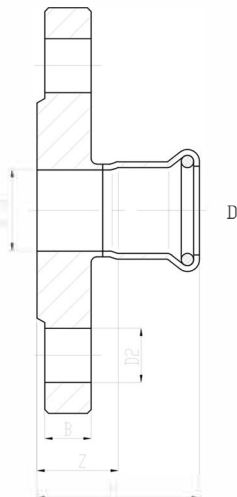
SIZE	PART No	D	L	WEIGHT KG EACH
15		15	33.5	0.028
18		18	34.5	0.028
22		22	39.2	0.04
28		28	47.5	0.06
35		35	51	0.079
42		42	59	0.115
54		54	67	0.163
76.1		76.1	94	0.422
88.9		88.9	103	0.543
108		108	124	0.787



Application	Operating temperature	Maximum operating pressure	Seal
Diesel	-20 to +70°C	16 BAR	FPM
Gasoil	-20 to +70°C	16 BAR	FPM
Ethanol	-20 to +70°C	16 BAR	FPM
Glycol/anti-freeze	-30 to +120°C	16 BAR	FPM
Petrol	-20 to +70°C	16 BAR	FPM
Adblue (DEF)	-20 to +70°C	16 BAR	FPM
Compressed air	0 to 100°C	16 BAR	EPDM
Hot and cold potable water	0 to 100°C	16 BAR	EPDM



PRESS FIT FLANGE COUPLING



PFS Press fittings offer reliable and consistent performance, combined with an easy installation process using common M-contour design and tooling compatibility.

Each end has a toroidal seat, holding a fluoropolymer (FPM) O-ring gasket. The fittings are installed with blue sleeves, which easily peel off after the pressing process.

All fittings are made from 316L (1.4404)

Fitted with Fluoropolymer (FPM) O-rings suitable for fuel delivery applications

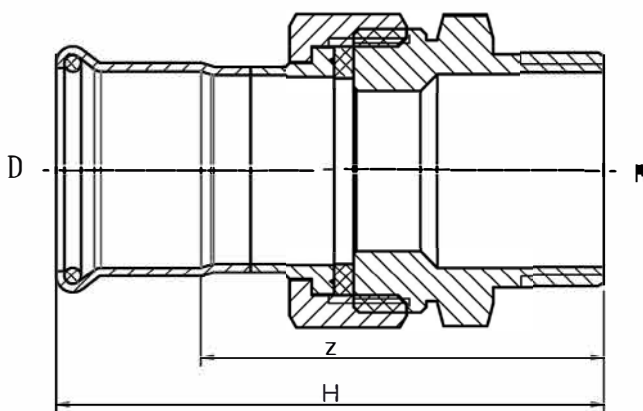


SIZE	PART No	D1	D	K	B	H	Z	D2	N	WEIGHT
										KG EACH
15		15	95	65	11	43	23	14	4	0.585
18		18	95	65	11	43	23	14	4	0.55
22		22	105	75	12	47	26	14	4	0.774
28		28	115	85	14	54	31	14	4	1.057
35		35	140	100	15	62	36	18	4	1.708
42		42	150	110	16	70	40	18	4	2.104
54		54	165	125	18	84	49	18	4	2.834
76.1		76.1	185	145	18	129	76	18	4	3.624
88.9		88.9	200	160	20	148	88	18	8	4.444
108		108	220	180	20	173	98	18	8	5.384

Application	Operating temperature	Maximum operating pressure	Seal
Diesel	-20 to +70°C	16 BAR	FPM
Gasoil	-20 to +70°C	16 BAR	FPM
Ethanol	-20 to +70°C	16 BAR	FPM
Glycol/anti-freeze	-30 to +120°C	16 BAR	FPM
Petrol	-20 to +70°C	16 BAR	FPM
Adblue (DEF)	-20 to +70°C	16 BAR	FPM
Compressed air	0 to 100°C	16 BAR	EPDM
Hot and cold potable water	0 to 100°C	16 BAR	EPDM



PRESS FIT MALE UNION COUPLING



PFS Press fittings offer reliable and consistent performance, combined with an easy installation process using common M-contour design and tooling compatibility.

Each end has a toroidal seat, holding a fluoropolymer (FPM) O-ring gasket. The fittings are installed with blue sleeves, which easily peel off after the pressing process.

All fittings are made from 316L (1.4404)

Fitted with Fluoropolymer (FPM) O-rings suitable for fuel delivery applications

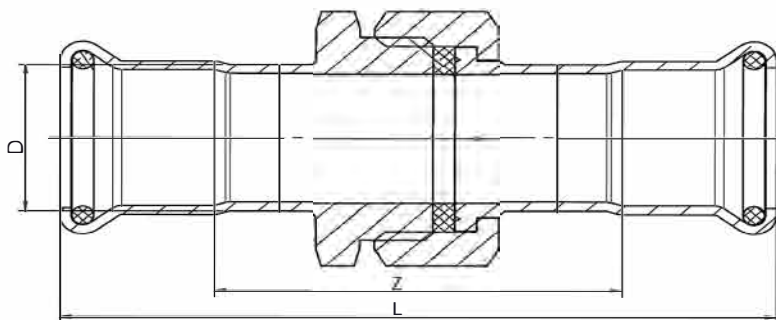


SIZE	PART No	D	R	H	Z	WEIGHT KG EACH
15x1/2"		15	1/2	70	50	0.092
15x3/4"		15	3/4	74	54	0.134
18x1/2"		18	1/2	74	54	0.136
18x3/4"		18	3/4	74	54	0.137
22x1/2"		22	1/2	76	55	0.14
22x3/4"		22	3/4	82	61	0.192
22x1"		22	1	86	65	0.207
28x1"		28	1	93	70	0.336
35x1 1/4"		35	1 1/4	102	76	0.463
42x1 1/2"		42	1 1/2	107	77	0.563
54x2"		54	2	118	83	0.843

Application	Operating temperature	Maximum operating pressure	Seal
Diesel	-20 to +70°C	16 BAR	FPM
Gasoil	-20 to +70°C	16 BAR	FPM
Ethanol	-20 to +70°C	16 BAR	FPM
Glycol/anti-freeze	-30 to +120°C	16 BAR	FPM
Petrol	-20 to +70°C	16 BAR	FPM
Adblue (DEF)	-20 to +70°C	16 BAR	FPM
Compressed air	0 to 100°C	16 BAR	EPDM
Hot and cold potable water	0 to 100°C	16 BAR	EPDM



PRESS FIT UNION



PFS Press fittings offer reliable and consistent performance, combined with an easy installation process using common M-contour design and tooling compatibility.

Each end has a toroidal seat, holding a fluoropolymer (FPM) O-ring gasket. The fittings are installed with blue sleeves, which easily peel off after the pressing process.

All fittings are made from 316L (1.4404)

Fitted with Fluoropolymer (FPM) O-rings suitable for fuel delivery applications

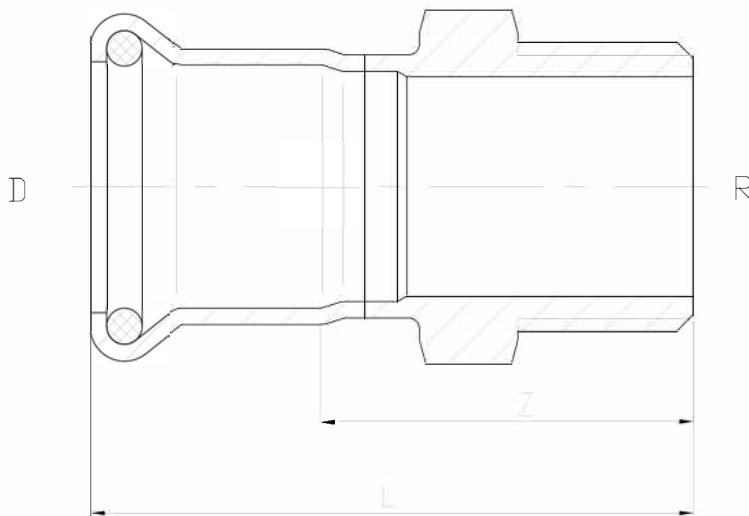


SIZE	PART No	D	L	Z	WEIGHT KG EACH
15		15	89	49	0.112
18		18	92	52	0.15
22		22	99	57	0.196
28		28	112	66	0.281
35		35	119	67	0.368
42		42	129	69	0.489
54		54	141	71	0.696

Application	Operating temperature	Maximum operating pressure	Seal
Diesel	-20 to +70°C	16 BAR	FPM
Gasoil	-20 to +70°C	16 BAR	FPM
Ethanol	-20 to +70°C	16 BAR	FPM
Glycol/anti-freeze	-30 to +120°C	16 BAR	FPM
Petrol	-20 to +70°C	16 BAR	FPM
Adblue (DEF)	-20 to +70°C	16 BAR	FPM
Compressed air	0 to 100°C	16 BAR	EPDM
Hot and cold potable water	0 to 100°C	16 BAR	EPDM



PRESS FIT MALE COUPLING



PFS Press fittings offer reliable and consistent performance, combined with an easy installation process using common M-contour design and tooling compatibility.

Each end has a toroidal seat, holding a fluoropolymer (FPM) O-ring gasket. The fittings are installed with blue sleeves, which easily peel off after the pressing process.

All fittings are made from 316L (1.4404)

SIZE	PART No	D	R	L	Z	WEIGHT KG EACH
15x1/2"		15	1/2	55	35	0.042
15x3/4"		15	3/4	57	37	0.075
18x1/2"		18	1/2	55	35	0.053
18x3/4"		18	3/4	59	39	0.081
22x1/2"		22	1/2	56	35	0.065
22x3/4"		22	3/4	60	39	0.093
22x1"		22	1	63	42	0.115
28x3/4"		28	3/4	66	43	0.107
28x1"		28	1	68	45	0.129
28x1 1/4"		28	1 1/4	70	47	0.169
35x1"		35	1	69	43	0.159
35x1 1/4"		35	1 1/4	70	44	0.165
35x1 1/2"		35	1 1/2	70	44	0.204
42x1 1/4"		42	1 1/4	76	46	0.192
42x1 1/2"		42	1 1/2	76	46	0.222
54x1 1/2"		54	1 1/2	84	49	0.298
54x2"		54	2	90	55	0.358
76.1x2 1/2"		76.1	2 1/2	115	62	0.683
88.9x3"		88.9	3	130	70	0.874
108x4"		108	4	157	82	1.411

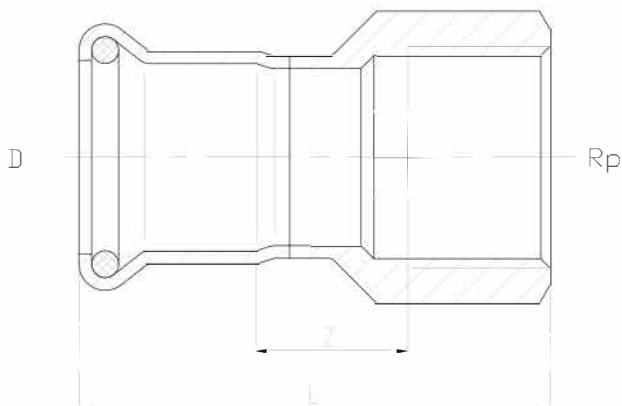
Fitted with Fluoropolymer (FPM) O-rings suitable for fuel delivery applications



Application	Operating temperature	Maximum operating pressure	Seal
Diesel	-20 to +70°C	16 BAR	FPM
Gasoil	-20 to +70°C	16 BAR	FPM
Ethanol	-20 to +70°C	16 BAR	FPM
Glycol/anti-freeze	-30 to +120°C	16 BAR	FPM
Petrol	-20 to +70°C	16 BAR	FPM
Adblue (DEF)	-20 to +70°C	16 BAR	FPM
Compressed air	0 to 100°C	16 BAR	EPDM
Hot and cold potable water	0 to 100°C	16 BAR	EPDM



PRESS FIT FEMALE COUPLING



PFS Press fittings offer reliable and consistent performance, combined with an easy installation process using common M-contour design and tooling compatibility.

Each end has a toroidal seat, holding a fluoropolymer (FPM) O-ring gasket. The fittings are installed with blue sleeves, which easily peel off after the pressing process.

All fittings are made from 316L (1.4404)

SIZE	PART No	D	Rp	L	Z	WEIGHT KG EACH
15x1/2"		15	1/2	55	20	0.053
15x3/4"		15	3/4	57	20.7	0.074
18x1/2"		18	1/2	59	24	0.062
18x3/4"		18	3/4	62	25.7	0.08
22x1/2"		22	1/2	60	24	0.083
22x3/4"		22	3/4	62	24.7	0.093
22x1"		22	1	66	26	0.118
28x3/4"		28	3/4	65	25.7	0.121
28x1"		28	1	70	28	0.13
28x1 1/4"		28	1 1/4	70	25.6	0.164
35x1"		35	1	65	20	0.182
35x1 1/4"		35	1 1/4	72	25	0.188
35x1 1/2"		35	1 1/2	72	25	0.206
42x1 1/4"		42	1 1/4	71	17	0.181
42x1 1/2"		42	1 1/2	77	23	0.356
54x1 1/2"		54	1 1/2	77	20.6	0.32
54x2"		54	2	95	34.3	0.4
76.1x2 1/2"		76.1	2 1/2	116	38	0.713

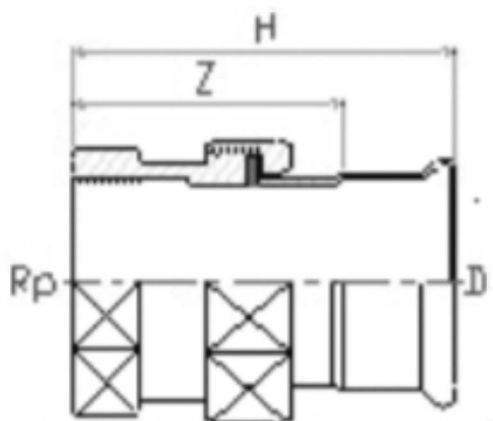
Fitted with Fluoropolymer (FPM) O-rings suitable for fuel delivery applications



Application	Operating temperature	Maximum operating pressure	Seal
Diesel	-20 to +70°C	16 BAR	FPM
Gasoil	-20 to +70°C	16 BAR	FPM
Ethanol	-20 to +70°C	16 BAR	FPM
Glycol/anti-freeze	-30 to +120°C	16 BAR	FPM
Petrol	-20 to +70°C	16 BAR	FPM
Adblue (DEF)	-20 to +70°C	16 BAR	FPM
Compressed air	0 to 100°C	16 BAR	EPDM
Hot and cold potable water	0 to 100°C	16 BAR	EPDM



PRESS FIT FEMALE UNION COUPLING



PFS Press fittings offer reliable and consistent performance, combined with an easy installation process using common M-contour design and tooling compatibility.

Each end has a toroidal seat, holding a fluoropolymer (FPM) O-ring gasket. The fittings are installed with blue sleeves, which easily peel off after the pressing process.

All fittings are made from 316L (1.4404)

Fitted with Fluoropolymer (FPM) O-rings suitable for fuel delivery applications

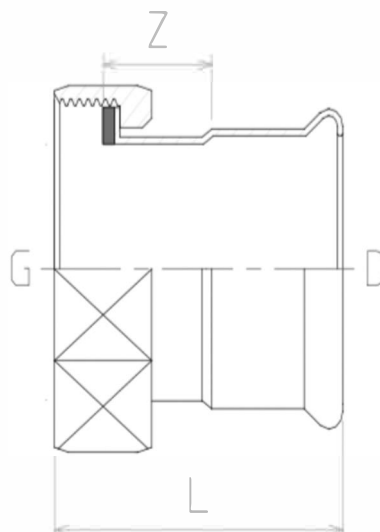


SIZE	PART No	D	Rp	H	Z	WEIGHT KG EACH
15x1/2"		15	1/2	70	50	0.096
15x3/4"		15	3/4	72	52	0.119
18x1/2"		18	1/2	72	52	0.1
18x3/4"		18	3/4	76	56	0.154
22x3/4"		22	3/4	81	60	0.195
22x1"		22	1	82	61	0.234
28x1"		28	1	88	65	0.31
35x1 1/4"		35	1 1/4	94	68	0.406
42x1 1/2"		42	1 1/2	99	69	0.543
54x2"		54	2	108	73	0.747

Application	Operating temperature	Maximum operating pressure	Seal
Diesel	-20 to +70°C	16 BAR	FPM
Gasoil	-20 to +70°C	16 BAR	FPM
Ethanol	-20 to +70°C	16 BAR	FPM
Glycol/anti-freeze	-30 to +120°C	16 BAR	FPM
Petrol	-20 to +70°C	16 BAR	FPM
Adblue (DEF)	-20 to +70°C	16 BAR	FPM
Compressed air	0 to 100°C	16 BAR	EPDM
Hot and cold potable water	0 to 100°C	16 BAR	EPDM



PRESS FIT ADAPTOR FEMALE COUPLING



PFS Press fittings offer reliable and consistent performance, combined with an easy installation process using common M-contour design and tooling compatibility.

Each end has a toroidal seat, holding a fluoropolymer (FPM) O-ring gasket. The fittings are installed with blue sleeves, which easily peel off after the pressing process.

All fittings are made from 316L (1.4404)

Fitted with Fluoropolymer (FPM) O-rings suitable for fuel delivery applications

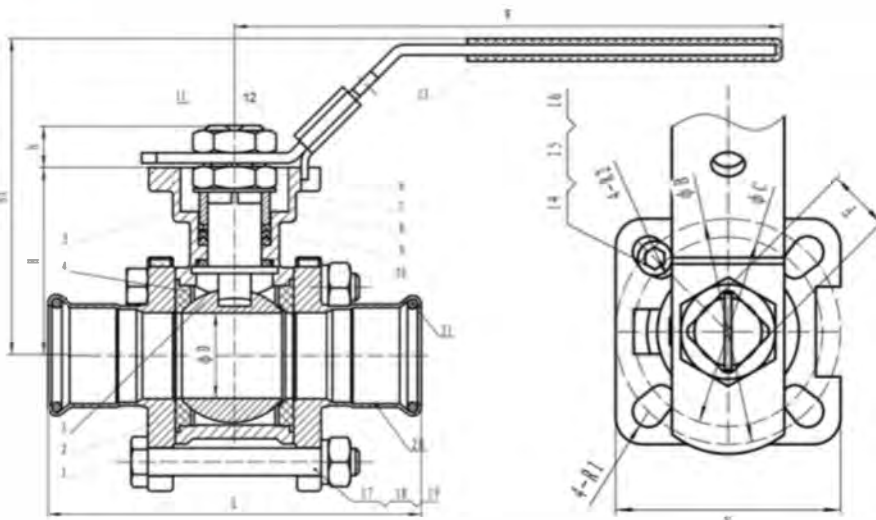
SIZE	PART No	D	G	L	Z	WEIGHT KG EACH
15x1/2"		15	1/2"	50	21	0.05
15x3/4"		15	3/4"	47	18	0.067
18x1/2"		18	1/2"	50	23	0.05
18x3/4"		18	3/4"	52	23	0.07
22x1"		22	1"	54	21	0.098
28x1"		28	1"	59	24	0.108
28x1 1/4"		28	1 1/4"	61	26	0.155
35x1 1/2"		35	1 1/2"	64	25	0.191



Application	Operating temperature	Maximum operating pressure	Seal
Diesel	-20 to +70°C	16 BAR	FPM
Gasoil	-20 to +70°C	16 BAR	FPM
Ethanol	-20 to +70°C	16 BAR	FPM
Glycol/anti-freeze	-30 to +120°C	16 BAR	FPM
Petrol	-20 to +70°C	16 BAR	FPM
Adblue (DEF)	-20 to +70°C	16 BAR	FPM
Compressed air	0 to 100°C	16 BAR	EPDM
Hot and cold potable water	0 to 100°C	16 BAR	EPDM



PRESS FIT BALL VALVE



Installation process using common M-contour design and tooling compatibility.

Each end has a toroidal seat, holding a fluoropolymer (FPM) O-ring gasket. The fittings are installed with blue sleeves, which easily peel off after the pressing process.

All fittings are made from 316L (1.4404)



Stainless Steel 3-Pc Ball Valve, Full bore, Pressends, PN63, PSI1000

- Pressends M-Contur
- Mounting Pad For ISO 5211
- Investment casting
- CE PED tested with test report 3.1 EN 10204

Dimension mm	Product code	D	L	H	h	F	A	B	C	R1	R2	H1	W
		mm											
15		12.5	130	38.4	9	9	42	42	36	3	3	68.5	135
18		15	106.3	42	9	9	42	42	36	3	3	72	135
22		20	118	48	9	9	42	42	36	3	3	78	135
28		25	134.6	55	11	11	50	50	42	3.5	3	90.5	152
42		38	160	70	14	14	70	70	50	4.5	3.5	107	188

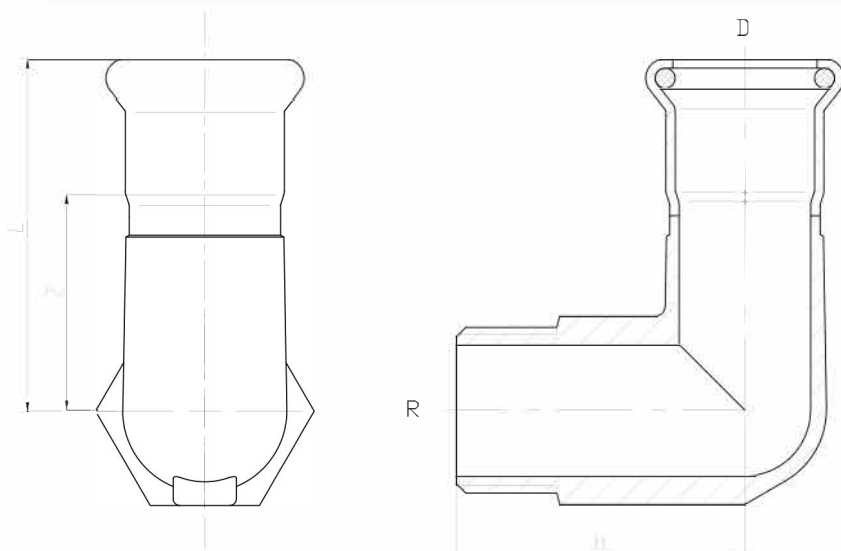
Fitted with Fluoropolymer (FPM) O-rings
suitable for fuel delivery applications



Application	Operating temperature	Maximum operating pressure	Seal
Diesel	-20 to +70°C	16 BAR	FPM
Gasoil	-20 to +70°C	16 BAR	FPM
Ethanol	-20 to +70°C	16 BAR	FPM
Glycol/anti-freeze	-30 to +120°C	16 BAR	FPM
Petrol	-20 to +70°C	16 BAR	FPM
Adblue (DEF)	-20 to +70°C	16 BAR	FPM
Compressed air	0 to 100°C	16 BAR	EPDM
Hot and cold potable water	0 to 100°C	16 BAR	EPDM



PRESS FIT MALE ELBOW



PFS Press fittings offer reliable and consistent performance, combined with an easy installation process using common M-contour design and tooling compatibility.

Each end has a toroidal seat, holding a fluoropolymer (FPM) O-ring gasket. The fittings are installed with blue sleeves, which easily peel off after the pressing process.

All fittings are made from 316L (1.4404)

Fitted with Fluoropolymer (FPM) O-rings suitable for fuel delivery applications

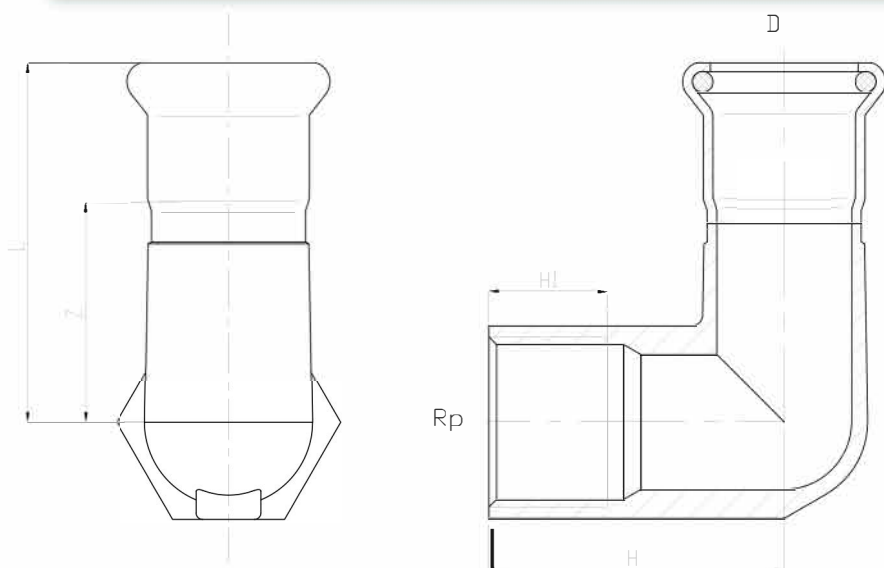


SIZE	PART No	D	R	L	H	Z	WEIGHT KG EACH
15		15	1/2	55	37	35	0.101
18		18	1/2	57	39	37	0.112
22		22	3/4	61	46	39	0.17
28		28	1	68	54	45	0.245
35		35	1 1/4	76	63	50	0.43
42		42	1 1/2	84	67	53	0.597
54		54	2	94	78	59	0.82

Application	Operating temperature	Maximum operating pressure	Seal
Diesel	-20 to +70°C	16 BAR	FPM
Gasoil	-20 to +70°C	16 BAR	FPM
Ethanol	-20 to +70°C	16 BAR	FPM
Glycol/anti-freeze	-30 to +120°C	16 BAR	FPM
Petrol	-20 to +70°C	16 BAR	FPM
Adblue (DEF)	-20 to +70°C	16 BAR	FPM
Compressed air	0 to 100°C	16 BAR	EPDM
Hot and cold potable water	0 to 100°C	16 BAR	EPDM



PRESS FIT FEMALE ELBOW



PFS Press fittings offer reliable and consistent performance, combined with an easy installation process using common M-contour design and tooling compatibility.

Each end has a toroidal seat, holding a fluoropolymer (FPM) O-ring gasket. The fittings are installed with blue sleeves, which easily peel off after the pressing process.

All fittings are made from 316L (1.4404)



Fitted with Fluoropolymer (FPM) O-rings suitable for fuel delivery applications

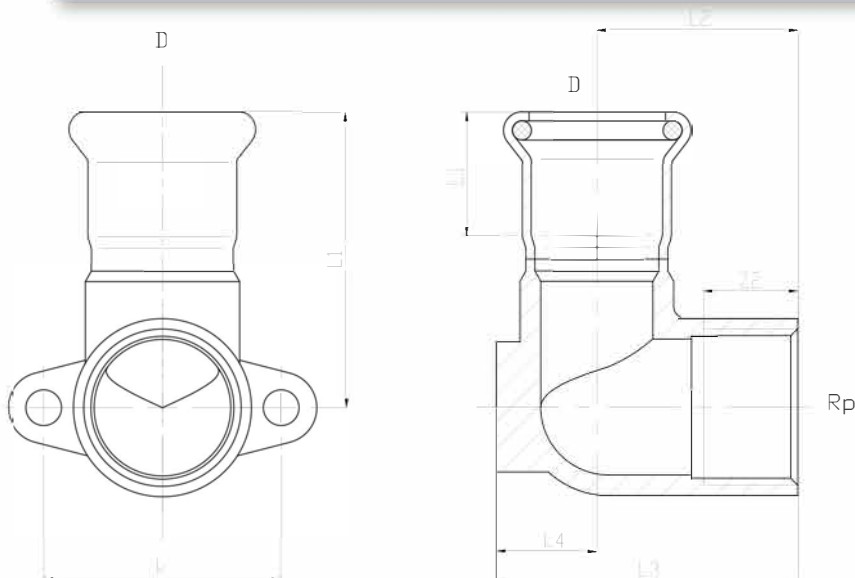


SIZE	PART No	D	Rp	L	H	Z	WEIGHT KG EACH
15		15	1/2	55	37	35	0.105
18		18	1/2	57	39	37	0.116
22		22	3/4	61	46	39	0.176
28		28	1	68	54	45	0.253
35		35	1 1/4	76	63	50	0.433

Application	Operating temperature	Maximum operating pressure	Seal
Diesel	-20 to +70°C	16 BAR	FPM
Gasoil	-20 to +70°C	16 BAR	FPM
Ethanol	-20 to +70°C	16 BAR	FPM
Glycol/anti-freeze	-30 to +120°C	16 BAR	FPM
Petrol	-20 to +70°C	16 BAR	FPM
Adblue (DEF)	-20 to +70°C	16 BAR	FPM
Compressed air	0 to 100°C	16 BAR	EPDM
Hot and cold potable water	0 to 100°C	16 BAR	EPDM



PRESS FIT FEMALE ELBOW WALL MOUNT



SIZE	PART No	D	Rp	L1	L2	L3	L4	Z1	Z2	WEIGHT KG EACH
15		15	1/2	50	30	43	13	30	15	0.099
18		18	1/2	50	30	43	13	30	15	0.102
22		22	3/4	55	34	51	17	34	16	0.156



Fitted with Fluoropolymer (FPM) O-rings suitable for fuel delivery applications



PFS Press fittings offer reliable and consistent performance, combined with an easy installation process using common M-contour design and tooling compatibility.

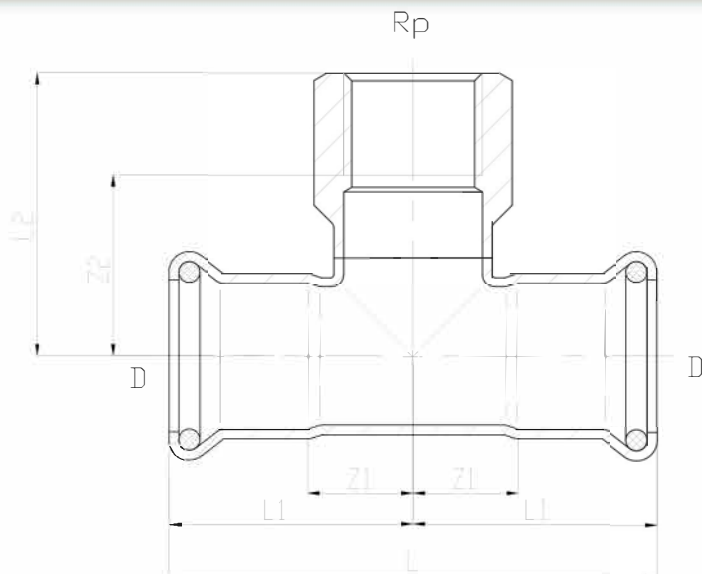
Each end has a toroidal seat, holding a fluoropolymer (FPM) O-ring gasket. The fittings are installed with blue sleeves, which easily peel off after the pressing process.

All fittings are made from 316L (1.4404)

Application	Operating temperature	Maximum operating pressure	Seal
Diesel	-20 to +70°C	16 BAR	FPM
Gasoil	-20 to +70°C	16 BAR	FPM
Ethanol	-20 to +70°C	16 BAR	FPM
Glycol/anti-freeze	-30 to +120°C	16 BAR	FPM
Petrol	-20 to +70°C	16 BAR	FPM
Adblue (DEF)	-20 to +70°C	16 BAR	FPM
Compressed air	0 to 100°C	16 BAR	EPDM
Hot and cold potable water	0 to 100°C	16 BAR	EPDM



PRESS FIT FEMALE TEE



PFS Press fittings offer reliable and consistent performance, combined with an easy

installation process using common M-contour design and tooling

Each end has a toroidal seat, holding a fluoropolymer (FPM) O-ring gasket. The fittings are installed with blue sleeves, which easily peel off after the pressing process.

All fittings are made from 316L (1.4404)

SIZE	PART No	D-RP-D	L	L1	L2	Z1	WEIGHT KG EACH
15x1/2"x15		15-Rp1/2-15	66	33	40	13	0.081
18x1/2"x18		18-Rp1/2-18	68	34	42	14	0.099
18x3/4"x18		18-Rp3/4-18	68	34	44	14	0.114
22x1/2"x22		22-Rp1/2-22	74	37	44	16	0.131
22x3/4"x22		22-Rp3/4-22	74	37	44	16	0.138
28x1/2"x28		28-Rp1/2-28	84	42	49	19	0.156
28x3/4"x28		28-Rp3/4-28	84	42	49	19	0.163
28x1"x28		28-Rp1-28	84	42	53	19	0.197
35x1/2"x35		35-Rp1/2-35	100	50	53	24	0.182
35x3/4"x35		35-Rp3/4-35	100	50	53	24	0.201
35x1"x35		35-Rp1-35	100	50	56	24	0.228
35x11/4"x35		35-Rp11/4-35	100	50	57	24	0.276
42x1/2"x42		42-Rp1/2-42	114	57	56	27	0.238
42x3/4"x42		42-Rp3/4-42	114	57	56	27	0.257
42x1"x42		42-Rp1-42	144	57	59	27	0.285
42x11/2"x42		42-Rp11/2-42	144	57	60	27	0.354
54x1/2"x54		54-Rp1/2-54	138	69	62	34	0.347
54x3/4"x54		54-Rp3/4-54	138	69	62	34	0.356
54x1"x54		54-Rp1-54	138	69	65	34	0.41
54x2"x54		54-Rp2-54	138	69	79	34	0.578
76.1x3/4"x76		76.1-Rp3/4-76.1	230	115	72	62	0.944
76.1x2x76		76.1-Rp2-76.1	230	115	89	62	1.165
88.9x3/4"x88.9		88.9-Rp3/4-88.9	260	130	78	70	1.235
88x2"x88		88.9-Rp2-88.9	260	130	96	70	1.46
108x3/4"x108		108-Rp3/4-108	310	155	88	80	1.769
108x2"x108		108-Rp2-108	310	155	105	80	1.99

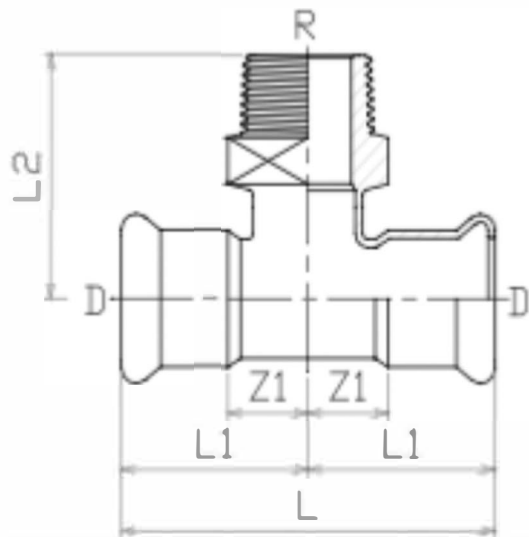
Fitted with Fluoropolymer (FPM) O-rings suitable for fuel delivery applications



Application	Operating temperature	Maximum operating pressure	Seal
Diesel	-20 to +70°C	16 BAR	FPM
Gasoil	-20 to +70°C	16 BAR	FPM
Ethanol	-20 to +70°C	16 BAR	FPM
Glycol/anti-freeze	-30 to +120°C	16 BAR	FPM
Petrol	-20 to +70°C	16 BAR	FPM
Adblue (DEF)	-20 to +70°C	16 BAR	FPM
Compressed air	0 to 100°C	16 BAR	EPDM
Hot and cold potable water	0 to 100°C	16 BAR	EPDM



PRESS FIT MALE TEE



PFS Press fittings offer reliable and consistent performance, easy installation process using common M-contour design and tooling compatibility.

Each end has a toroidal seat, holding a fluoropolymer (FPM) O-ring gasket. The fittings are installed with blue sleeves, which easily peel off after the pressing process.

All fittings are made from 316L (1.4404)

Fitted with Fluoropolymer (FPM) O-rings suitable for fuel delivery applications



SIZE	PART No	D-R-D	L	L1	LZ	Z1	WEIGHT KG EACH
15x1/2"x15		15-Rp1/2-15	66	33	38	13	0.074
18x1/2"x18		18-Rp1/2-18	68	34	39	14	0.087
22x1/2"x22		22-Rp1/2-22	74	37	41	16	0.104
22x3/4"x22		22-Rp3/4-22	74	37	45	16	0.141
22x1"x22		22-Rp1-22	74	37	48	16	0.162
28x1/2"x28		28-Rp1/2-28	84	42	44	19	0.134
28x1"x28		28-Rp1-28	84	42	51	19	0.191
35x3/4"x35		35-R3/4-35	100	50	51	35	0.2
35x11/4"x35		35-Rp11/4-35	100	50	56	24	0.257

Application	Operating temperature	Maximum operating pressure	Seal
Diesel	-20 to +70°C	16 BAR	FPM
Gasoil	-20 to +70°C	16 BAR	FPM
Ethanol	-20 to +70°C	16 BAR	FPM
Glycol/anti-freeze	-30 to +120°C	16 BAR	FPM
Petrol	-20 to +70°C	16 BAR	FPM
Adblue (DEF)	-20 to +70°C	16 BAR	FPM
Compressed air	0 to 100°C	16 BAR	EPDM
Hot and cold potable water	0 to 100°C	16 BAR	EPDM